

6040 P8 COMBI M1 R4 H1200


CIAM



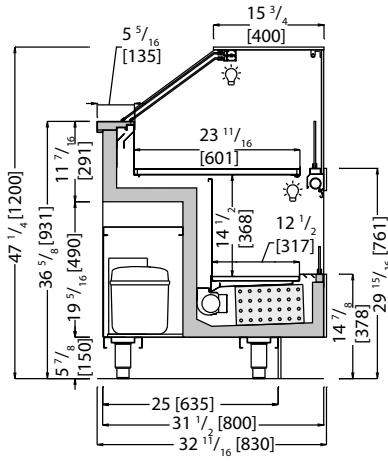
Combi M1 Showcases.

Glass structure with mechanical fastening | heated glass sides | bright aluminum LED light fixture | PETG easy sliding doors system | anti-fog air baffle | Combined positive temperature display cabinet consisting of 2 compartments, one self-service and the other service-over | tank insulated with ecological polyurethane and covered with stainless steel | ventilated refrigeration and thermostatic valve | electronic control unit and digital temperature reader flush with the surface | display trays and perimetric shelf in polished steel | worktop in polished steel | lower compartment with closure curtain in micro-fabric and lighting with no-spot 3000°K strip LED lighting | galvanized steel frame with height-adjustable stainless steel feet | technical compartment and open compartment in polished stainless steel

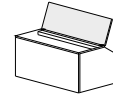


 +39.2°F / +46.4°F





TS
uv-glued



R4UP
lift-up top glass

Technical



Ventilated



R452A



Hermetic



Led no-spot 3000°K



Automatic /
electrical



N. 3 / RH 60% max
75 °F



220 V / 1 ph / 60 Hz



+39.2°F / +46.4°F

Data Sheet

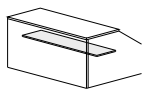
*Measurements are subject to revisions/updates, please refer to manufacturer's drawings at order confirmation



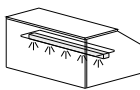
*Crate weight only

	Model Code	Dimensions L x D x H Inches	Weight Lbs	Max Pwr. Consumption W / A	Avg Operating Consumption KW/H	Cooling Power/Expansion BTU / °F	GAS Type
	S38R412CM100I (+PANELS)	39 3/8 x 32 11/16 x 47 1/4 46 7/16 x 39 3/4 x 58 11/16	234 196	1250 / 6.5	0.8	4265 / 14	R452A
	S38R412CM130I (+PANELS)	51 3/16 x 32 11/16 x 47 1/4 58 1/4 x 39 3/4 x 58 11/16	397 245	1350 / 6.9	0.9	4606 / 14	R452A
	S38R412CM150I (+PANELS)	59 1/16 x 32 11/16 x 47 1/4 66 1/8 x 39 3/4 x 58 11/16	441 278	1500 / 7.0	1.0	5118 / 14	R452A
	S38R412CM170I (+PANELS)	66 15/16 x 32 11/16 x 47 1/4 74 x 39 3/4 x 58 11/16	507 311	1600 / 7.2	1.1	5630 / 14	R452A
	S38R412CM200I (+PANELS)	78 3/4 x 32 11/16 x 47 1/4 85 13/16 x 39 3/4 x 58 11/16	551 364	1800 / 8.0	1.3	6142 / 14	R452A

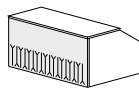
Optionals:



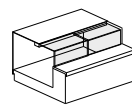
CIV65-68
Stationary shelf
option



CIV96
LED lighting
for shelf

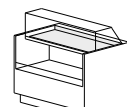


VRG01
Heated front

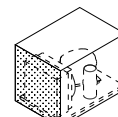


SCORTF01-03
L-shaped doors

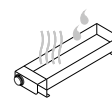
39.2°F/Ambient



SWITCH01
Switch from
39.2°F to ambient



CIT44
Easy clean filter



CIT16
Condensation
water pan



CIM08
Kit wheels