

6040 P8 COMBI H1 R4 H1200

CiAM



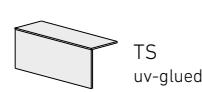
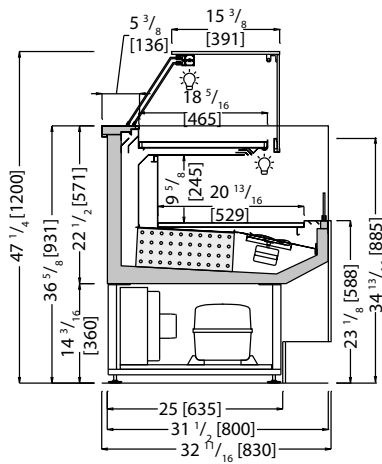
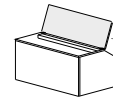
Combi H1 Showcases.

Glass structure with mechanical fastening | heated glass sides | bright aluminum LED light fixture | PETG easy sliding doors system | anti-fog air baffle | Combined positive temperature display case consisting of 2 compartments, one self-service and the other service-over | tank insulated with ecological polyurethane and covered with stainless steel | ventilated refrigeration and thermostatic valve | electronic control unit and digital temperature reader flush with the surface | display trays and perimeter polished steel shelf | polished steel worktop | lower lighting compartment with no-spot 3000°K strip LED lighting | painted steel supporting frame with heightadjustable feet | technical compartment and open compartment in polished stainless steel



+39.2°F / +46.4°F




 TS
uv-glued

 R4UP
lift-up top glass

Technical



Ventilated



R452A



Hermetic



Led no-spot 3000°K


 Automatic /
electrical

 N. 3 / RH 60%
75 °F


220 V / 1 ph / 60 Hz



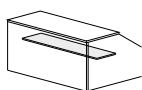
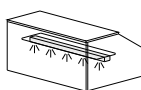
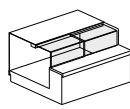
+39.2°F / +46.4°F

Data Sheet

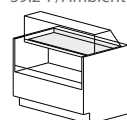
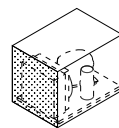
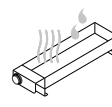
*Measurements are subject to revisions/updates, please refer to manufacturer's drawings at order confirmation *Crate weight only

	Model Code	Dimensions L x D x H Inches	Weight Lbs	Max Pwr. Consumption W / A	Avg Operating Consumption KW/H	Cooling Power/Expansion BTU / °F	GAS Type
	S18R412CM100I (+PANELS)	39 3/8 x 32 11/16 x 47 1/4 46 7/16 x 39 3/4 x 58 11/16	331 187	1250 / 6.5	0.7	4095 / 14	R452A
	S18R412CM130I (+PANELS)	51 3/16 x 32 11/16 x 47 1/4 58 1/4 x 39 3/4 x 58 11/16	397 243	1350 / 6.9	0.9	4606 / 14	R452A
	S18R412CM150I (+PANELS)	59 1/16 x 32 11/16 x 47 1/4 66 1/8 x 39 3/4 x 58 11/16	441 276	1500 / 7.0	1.0	5118 / 14	R452A
	S18R412CM170I (+PANELS)	66 15/16 x 32 11/16 x 47 1/4 74 x 39 3/4 x 58 11/16	507 309	1600 / 7.5	1.2	5630 / 14	R452A
	S18R412CM200I (+PANELS)	78 3/4 x 32 11/16 x 47 1/4 85 13/16 x 39 3/4 x 58 11/16	551 353	1800 / 8.0	1.3	6142 / 14	R452A

Optionals:


 CIV65-68
Stationary shelf
option

 CIV96
LED lighting
for shelf

 SCORTF01-03
L-shaped doors

39.2°F/Ambient


 SWITCH01
Switch from
39.2°F to ambient

 CIT44
Easy clean filter

 CIT16
Condensation
water pan

 CIM08
Kit wheels